

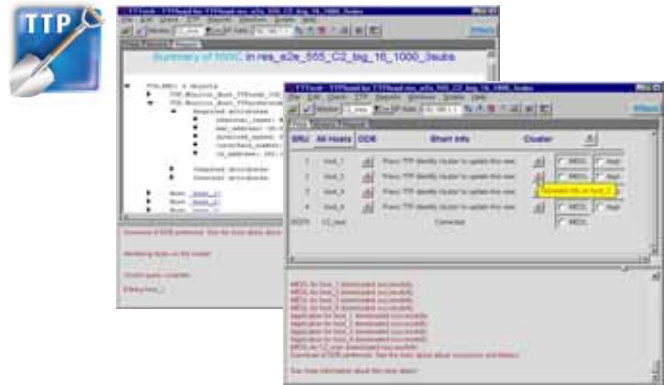
# TTP Load

The TTP Loading Tool

TTP Load provides comprehensive loading facilities for cluster and node configurations that are generated with TTP Plan and TTP Build, the cluster and node design tools. Configuration and application data can be conveniently transferred from the computer to TTP<sup>®</sup> nodes. A complete cluster can be loaded automatically in one simple step by employing an easy-to-use graphical user interface or a batch interface.

## KEY FEATURES/BENEFITS

- Configuration data loading
- Application image loading
- Fast update of all nodes in the network
- Reduced development time and cost
- Query function for the TTP nodes in the network
- Easy-to-use graphical user interface
- Command line interface
- Flexible programming interface (Python)



## Configuration Data and Application Load

TTP Load is a software tool that enables the user to load the following to the TTP nodes:

- Message Descriptor List (MEDL) - the configuration data regarding the TTP communication schedule
- Application image – containing the operating system, application tasks, and possible application configuration files.

TTP Load can be operated using the graphical user interface (GUI), or the command line interface.

TTP Load implements functions such as contacting the TTP Monitoring Node, download and upload of data, and monitoring of the load process.

## TTP Monitoring Node

TTP Load requires dedicated hardware called TTP Monitoring Node to be attached to the cluster in which the load target node is located. The Monitoring Node converts data it receives from TTP Load to data that is transferable over the bus. A PC running TTP Load is connected via Ethernet interface to the TTP Monitoring node.

A query function identifies all nodes of the TTP network and provides their status information. Load and query are performed by means of an Ethernet connection from the computer to the TTP Monitoring Node, which is attached to the TTP network.

### Functionality

- Loading of configuration data (MEDLs) to TTP nodes
- Loading of node application
- Querying to get status information of all nodes of a TTP network
- High-speed Ethernet connection to TTP Monitoring Node via standard TCP/IP protocol
- Support for all TTTech hardware targets
  - TTP Powernode
  - TTP Powerlinks
  - TTP Monitoring Node
- Flexible programming/scripting interface (Python)
- Support for austriamicrosystems AS8202NF (C2NF) TTP communication controller
- Upload support from the GUI interface

### System Requirements

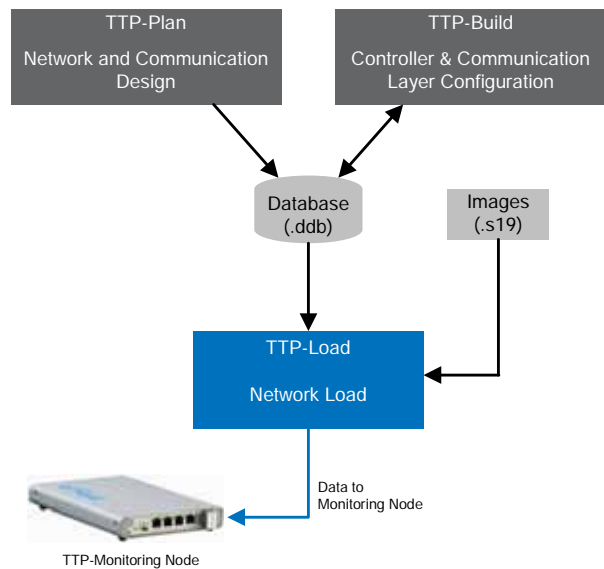
- Operating system: Microsoft Windows 2000, Windows XP
- Standard PC with Windows XP; 1.5 GHz or above; 1 GB RAM
- Network: Ethernet 100Base-TX to link to TTP Monitoring Node

### Related Products

TTP Plan is the network and communication design tool for TTP, and is used to create the download database.

TTP Build generates the MEDL and the COM Layer configuration based on the cluster design.

TTP Monitoring node converts data it receives from TTP Load to data that is transferable over the TTP bus.



### Order Number

- S05.00.6: TTP Load V6
- M05.00.0: 1 year software maintenance service for TTP Load

### TTTech Contact Information

Headquarters Europe, Austria  
Tel.: +43 1 585 34 34-0  
E-mail: products@tttech.com

North America, USA  
Tel.: +1 760 603 9393  
E-mail: products@tttech.com

Asia, Japan  
Tel.: +81 45 470 1867  
E-mail: products@tttech.com

[www.tttech.com](http://www.tttech.com)